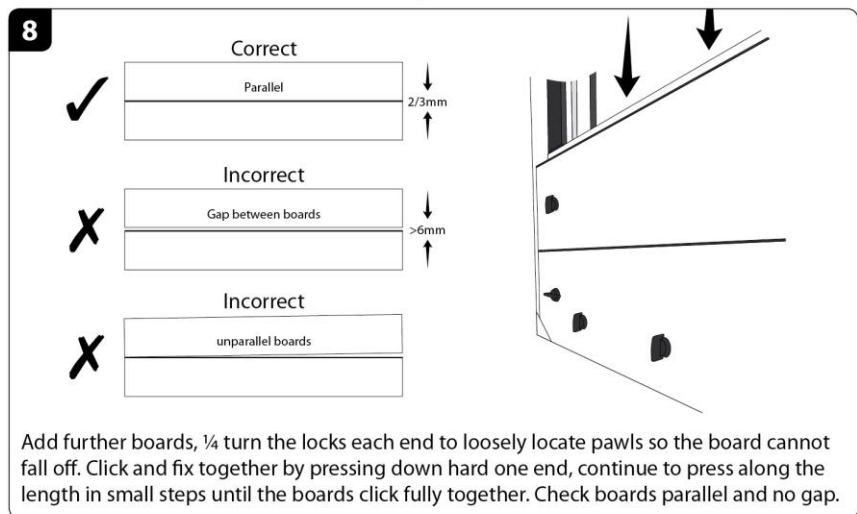
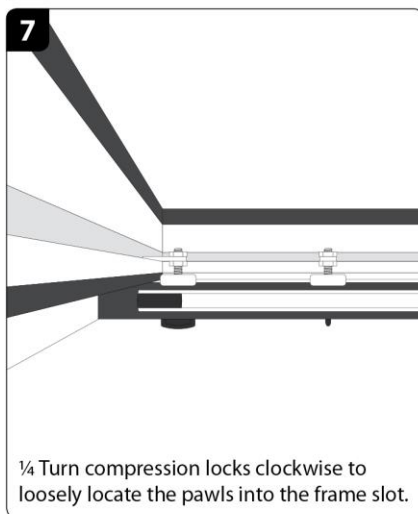
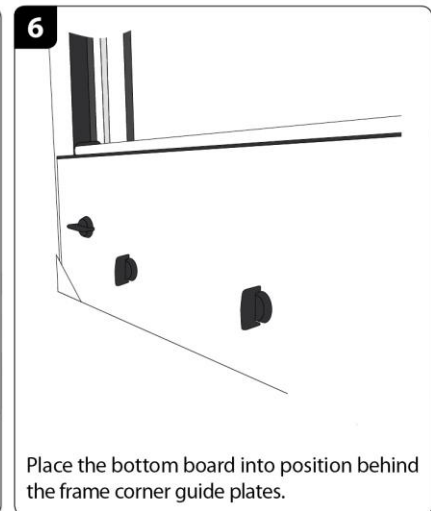
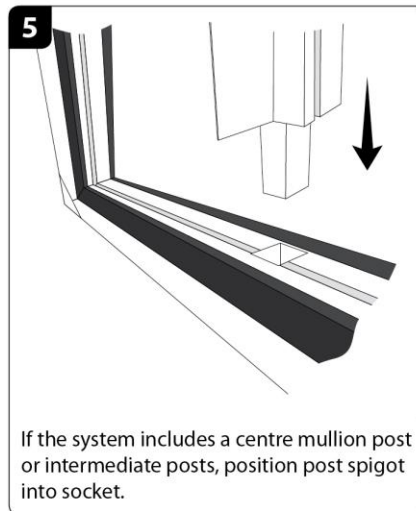
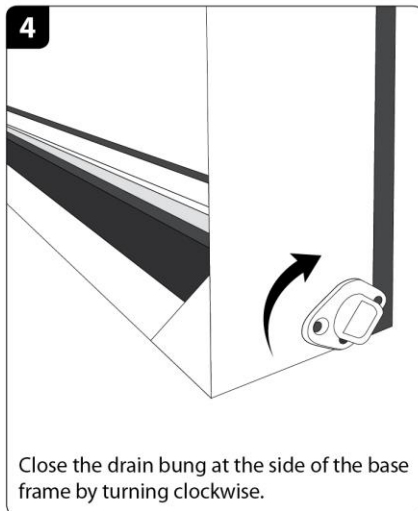
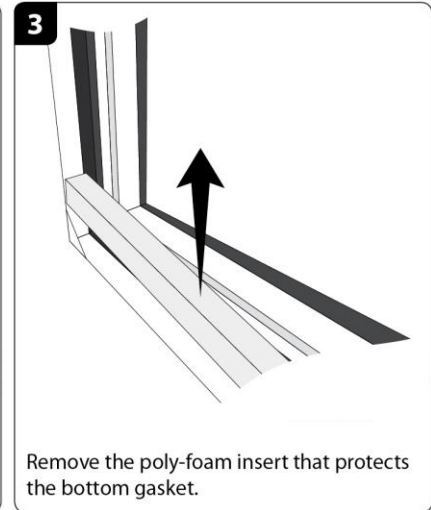
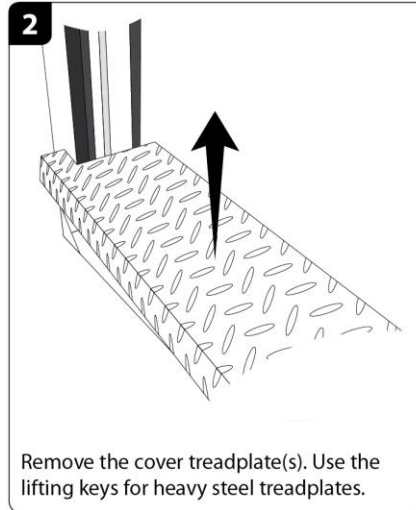
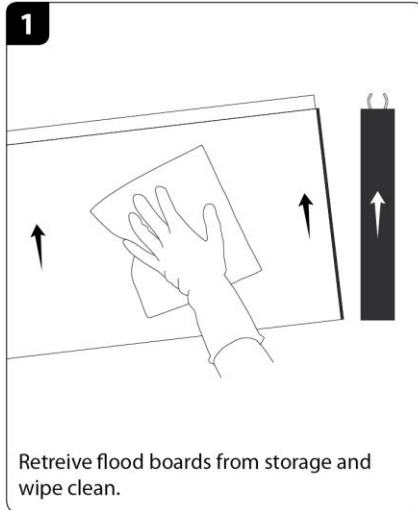
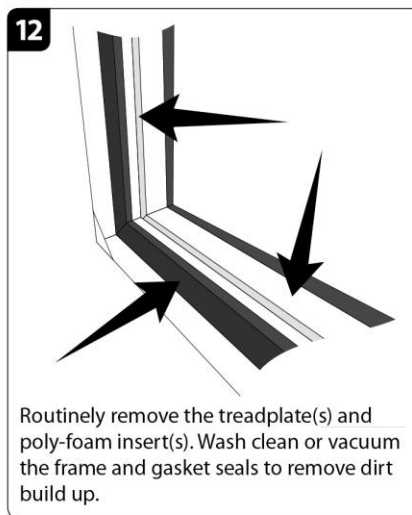
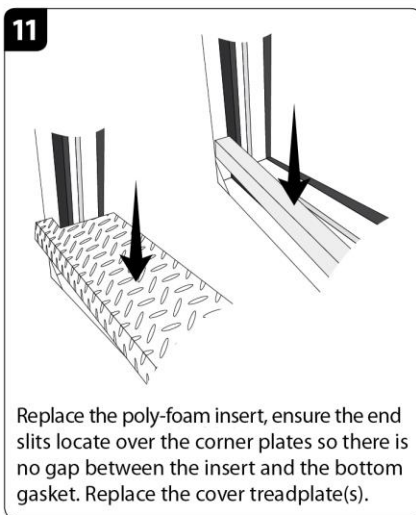
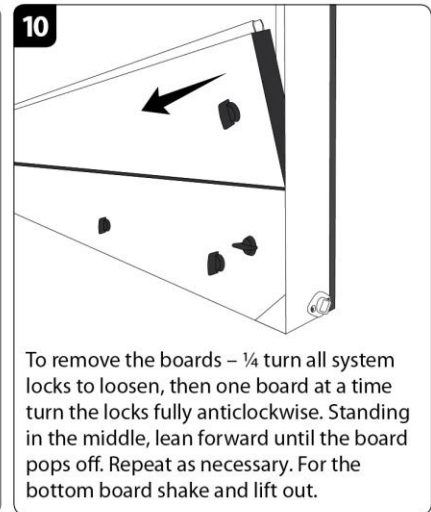
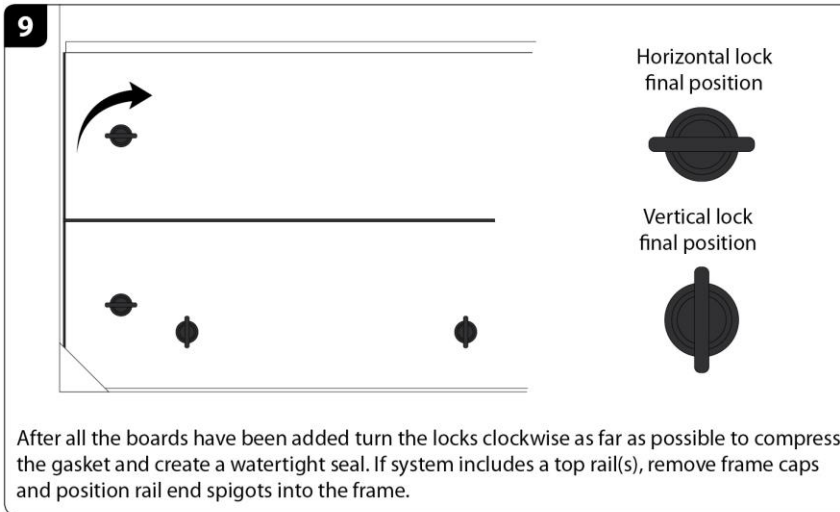


## Protection System Deployment Guide

**Telephone Helpline  
01603 879 977**





Flood Ark barriers are designed for temporary use to stop water from entering a property. Flood Ark barriers should be used in conjunction with other measures to mitigate flood risk. The system has been successfully tested for the British Standard Kitemark PAS 1188-1:2014 over a period of 48 hours; however, our design enables the flood boards to remain in place during a flood situation for up to 2 weeks.

Barrier flood boards are lightweight, reusable, require no tools to assemble so can be used by people of all abilities. No individual flood board weighs more than 12 kilograms so can be lifted safely in accordance with HSE Manual Handling Regulations 1992 (as amended).

Once flood boards have been retrieved from storage it takes no more than 5 minutes to deploy one barrier. For barriers with multiple boards and division posts, each set of boards will also take no more than 5 minutes to erect.

A downloadable copy of the deployment guide is available from [www.floodark.com/support](http://www.floodark.com/support) Or by calling us to request a replacement hard copy.